

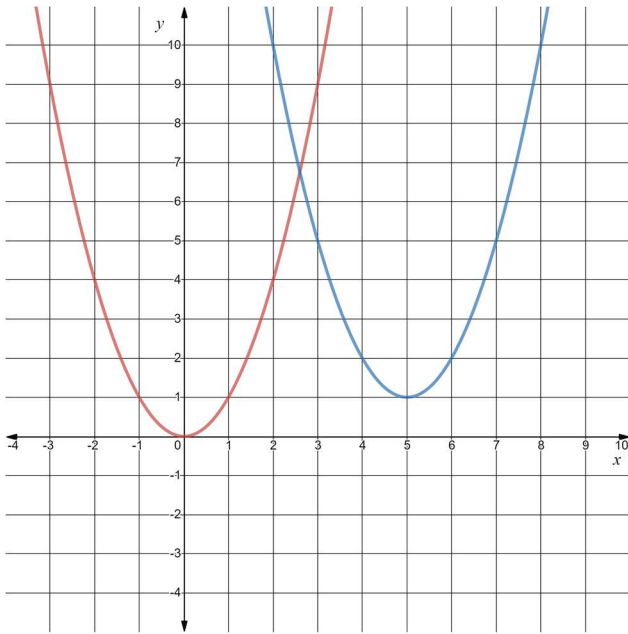
Name: _____

Date: _____

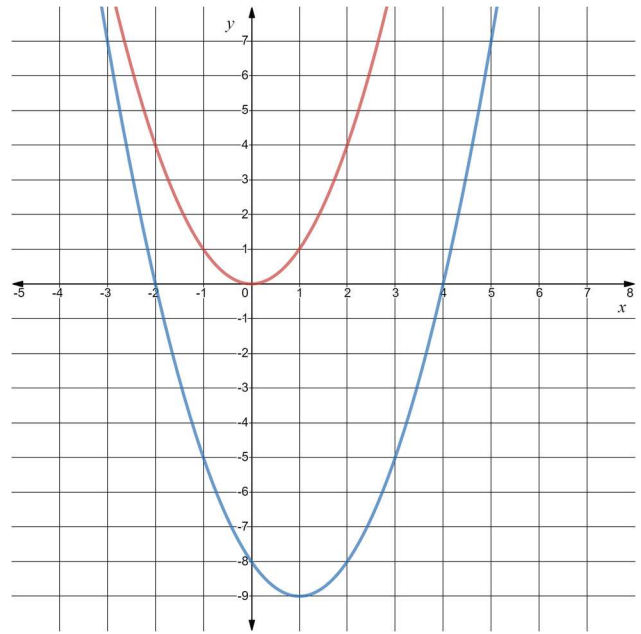
Learning Goal 3.1

Given a quadratic function, identify the transformations that graph has undergone from the standard graph of $y = x^2$.

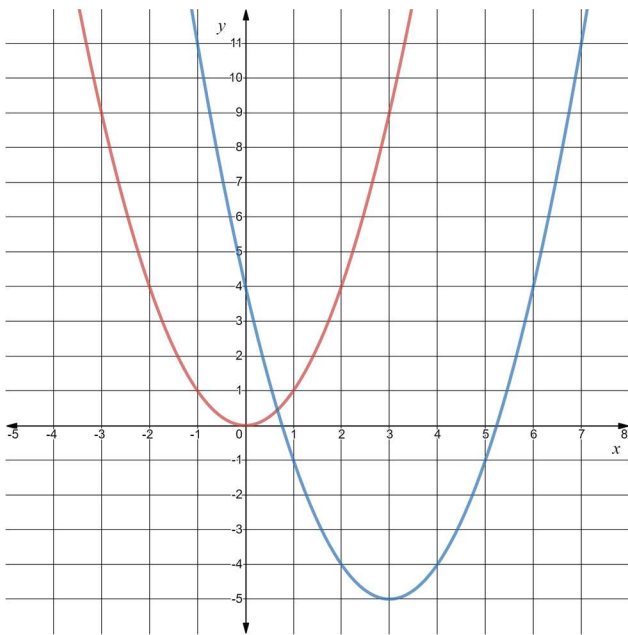
Graph $f(x) = (x - 5)^2 + 1$



Graph $f(x) = (x - 1)^2 - 9$



Graph $f(x) = (x - 3)^2 - 5$



Graph $f(x) = (x + 5)^2 + 2$

