

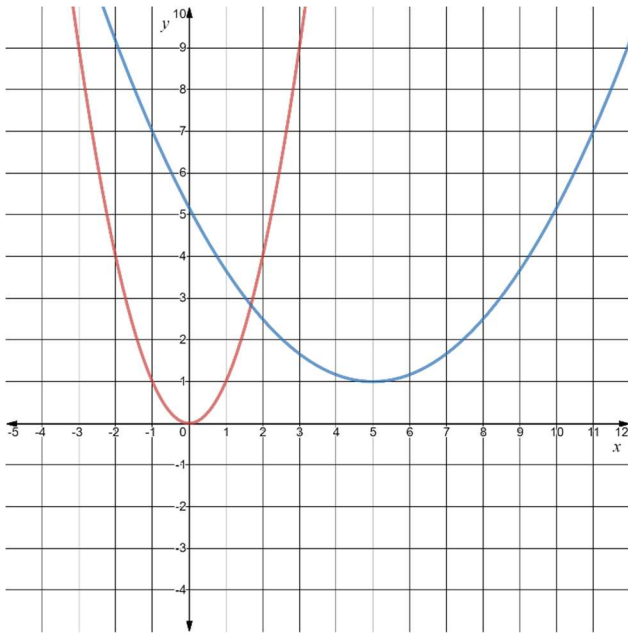
Name: \_\_\_\_\_

Date: \_\_\_\_\_

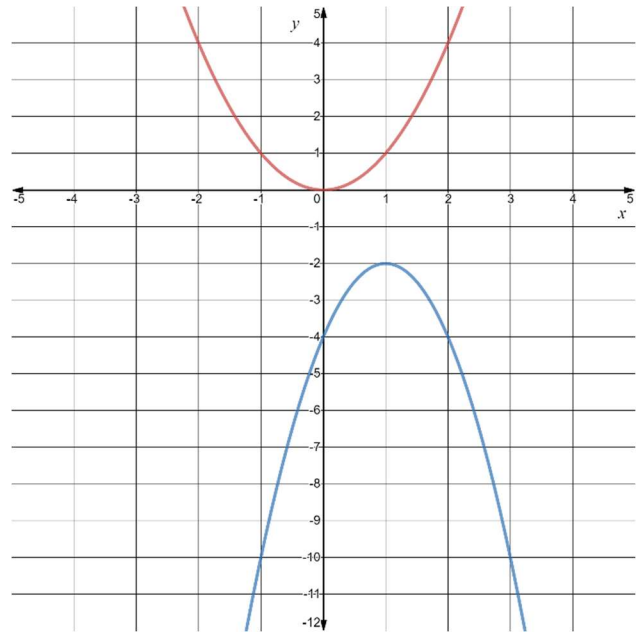
**Learning Goal 3.1**

Given a quadratic function, identify the transformations that graph has undergone from the standard graph of  $y = x^2$ .

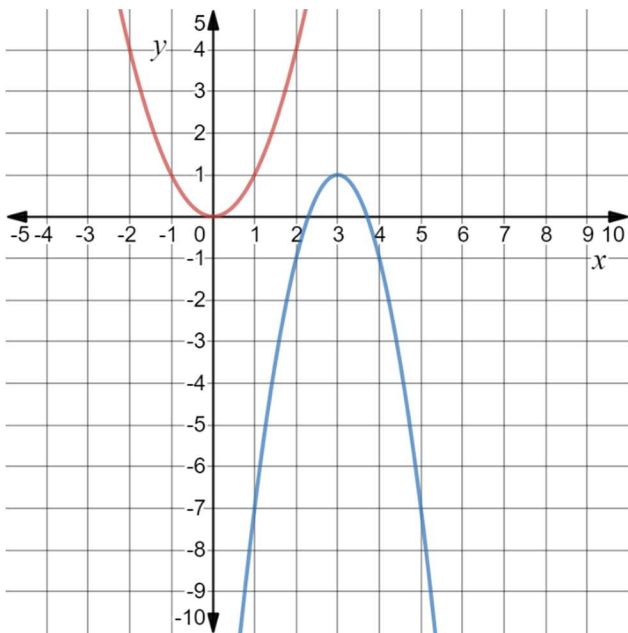
Graph  $f(x) = \frac{1}{6}(x - 5)^2 + 1$



Graph  $f(x) = -2(x - 1)^2 - 2$



Graph  $f(x) = -2(x - 3)^2 + 1$



Graph  $f(x) = -\frac{1}{3}(x + 2)^2 - 1$

